

*Contessa II*  
*seconda*



# A true icon lasts. A true icon evolves.

Since 2002, Contessa has set the standard for seating in office spaces around the world.  
Now, she is reborn as Contessa Seconda.

Contessa Seconda unites the flowing,  
organic lines and charm of the original with new engineering and functionality.  
With more color options for the mesh, fabric, and frame.  
All to meet the demands of the modern work style.

Contessa Seconda is the evolution of an icon — for the workplace of today, and of tomorrow.

## *Contessa II* seconda



Located in the suburbs of Torino Italy, GiugiaroDesign, the Industrial Design Business Unit of Italdesign Giugiaro, was founded in 1981 and today ranks among the leading organizations in the field of industrial design worldwide. GiugiaroDesign has received acclamation for its stylish and user-centric functional designs of various products, ranging from furniture and home appliances, to watches and cameras.



PRODUCT CERTIFIED  
FOR LOW CHEMICAL  
EMISSIONS:  
UL.COM/GG  
UL 2818









## A classic, re-imagined.

Four design principles led the upgrade of this iconic chair:

### 1 Engineered for modern offices

Built to new strength standards,  
to meet the requirements of today's task chairs.

### 2 Personal comfort

Okamura leverages its world-renowned technology  
for comfort and a superb fit to every body.

### 3 New colors and frame options

Available in an exciting, industry-leading yet refined palette.  
A white frame option is also newly available.

### 4 Extended line-up for any space

The full range of Contessa Seconda caters to conference rooms,  
meeting areas, touch-downs, and task applications.



# The perfect fit.

Contessa Seconda is engineered for any body type, delivering world-class strength to all.







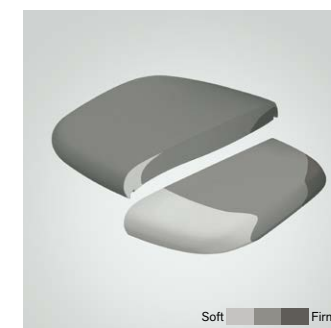
Luxury evolved. So has Contessa.



The backrest frame has been streamlined to create a slimmer aesthetic, with an increased flexibility that gently follows the natural movement of the body — without any sacrifice of support.



For added stability, the mesh seat frame is now constructed in a one-piece ring structure with soft edges, ensuring improved weight-distribution and comfort.



Okamura's unique Multiple Density Cushion utilizes three types of urethane foam, of varying firmness layered together, to promote healthy sitting. The cushion provides softer support at the front of the seat, reducing pressure on the thighs for improved circulation; denser cushioning at the back firmly supports the hips for stability and improved posture.

Soft Firm





Smart operation, now in 4-D.



#### Smart Operation

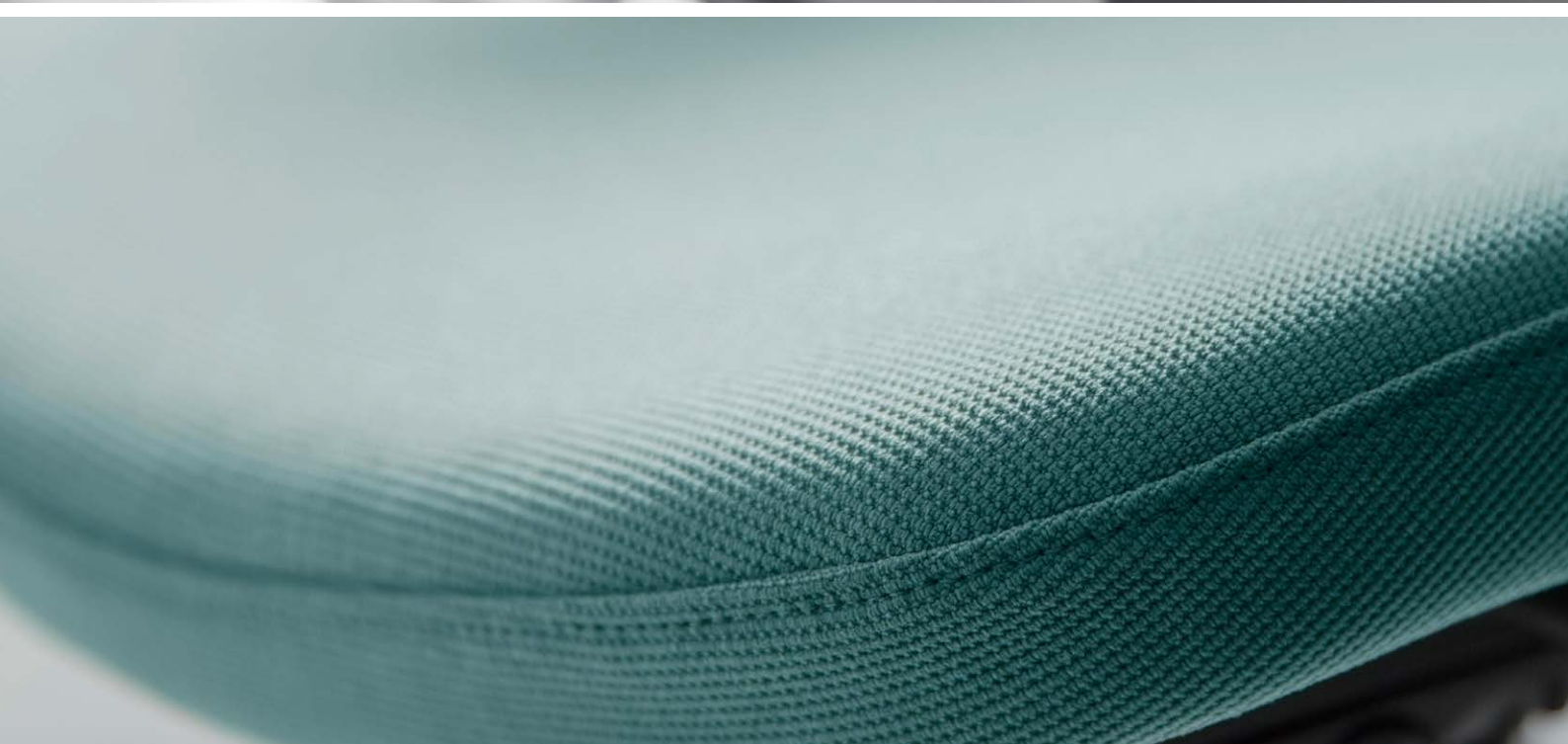
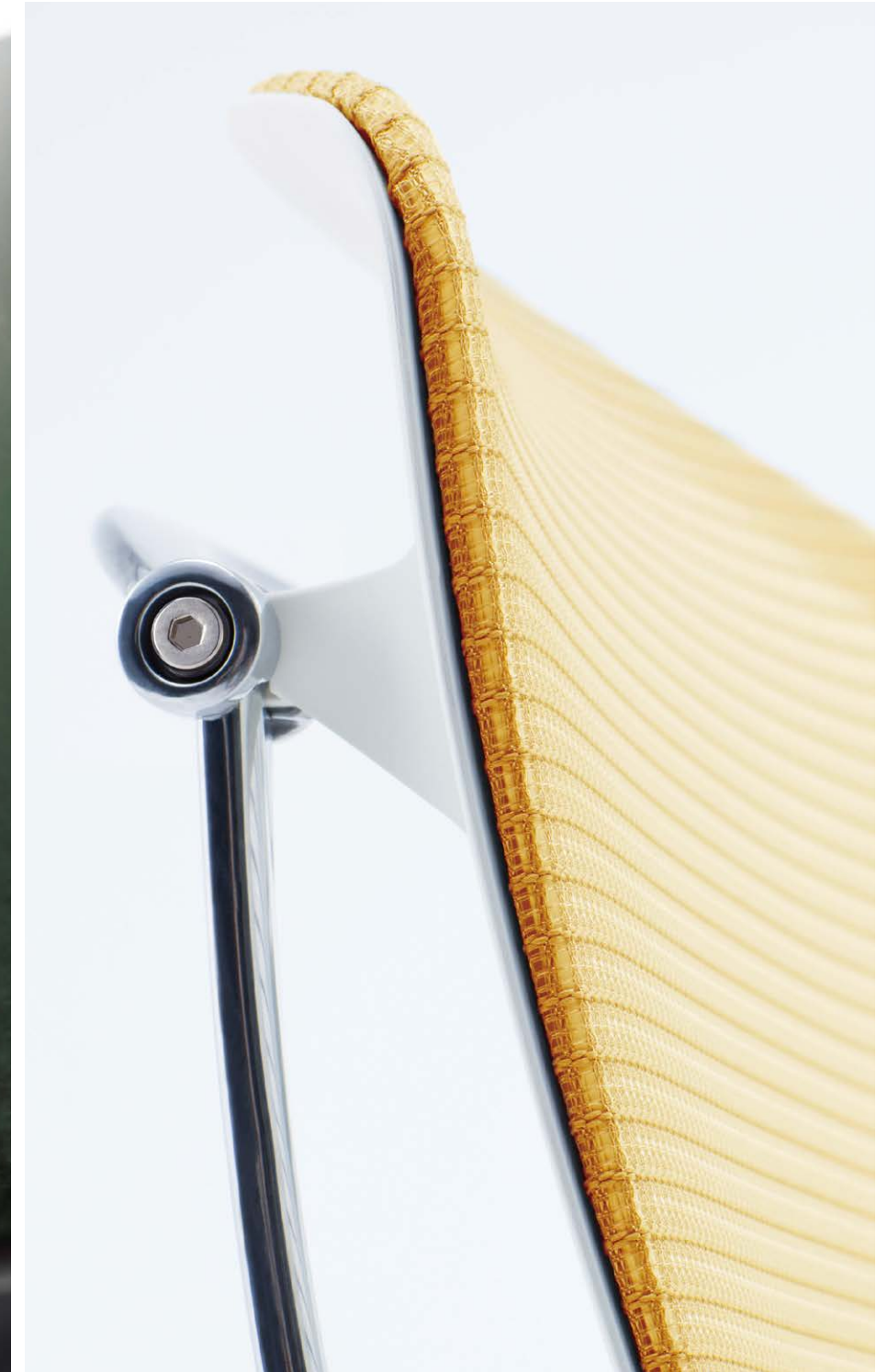
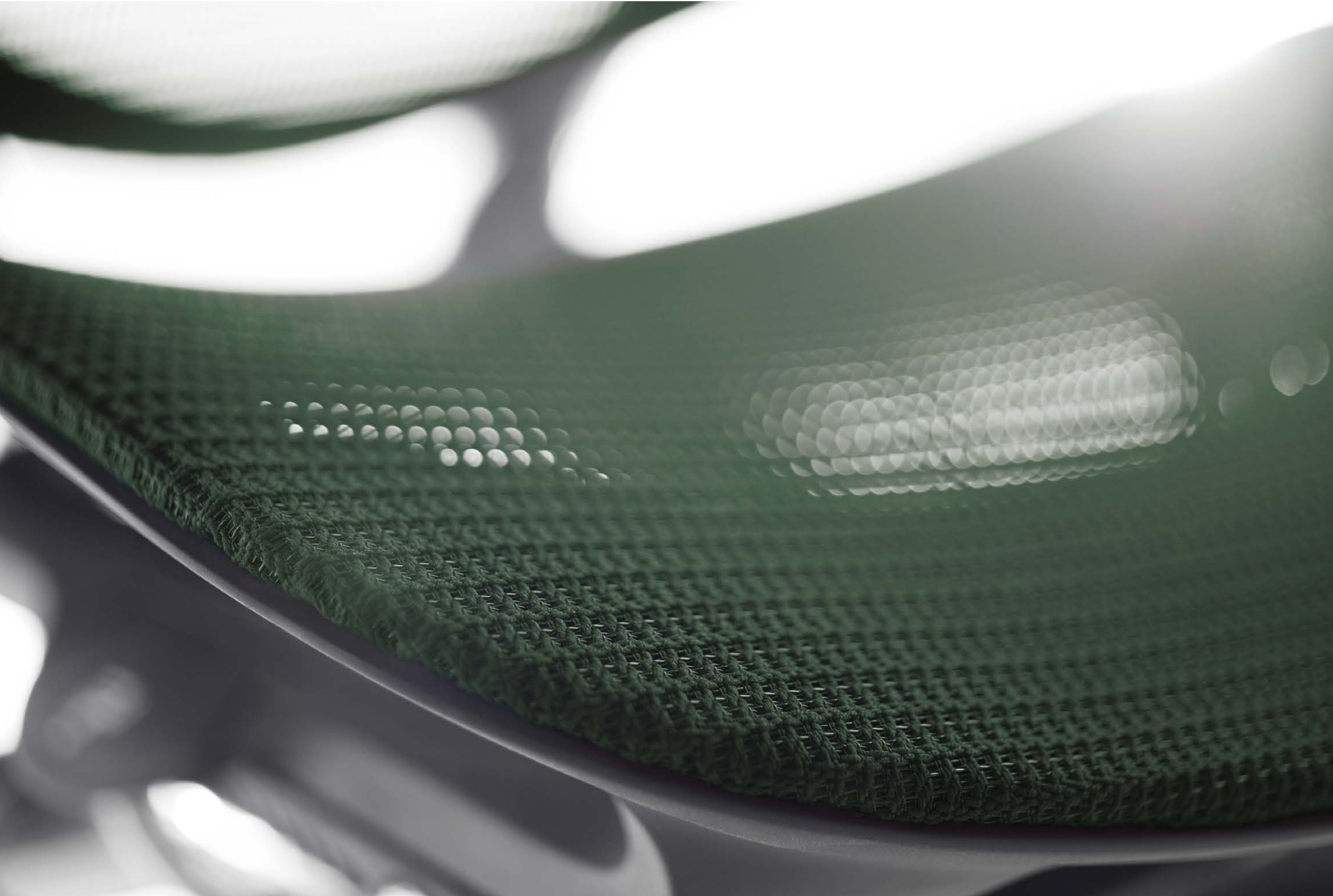
Adjust your entire seating experience with a touch of your fingertips. Lock and unlock the backrest, alternating between a free recline and one of five pre-set tension gradations — all using a lever in the left armrest. Adjust the chair height, within a range of 435 to 545 mm, using a lever in the right armrest.



#### Adjustable Arms

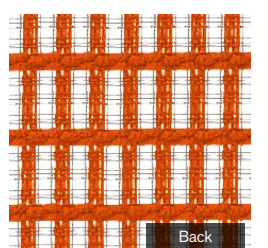
Adjustable arms can be adjusted in four dimensions: height, depth, width, and angle — enabling the most comfortable elbow support for the various tasks at hand.



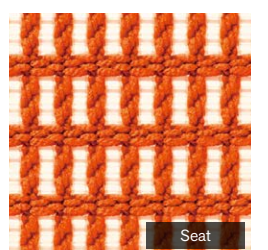


## Mesh, made even more beautiful.

For years, Okamura has made beautiful, tactile mesh for its seating by intertwining luxe-touch and stretchable, strong threads. Contessa Seconda features an upgraded mesh, that is more permeable and lighter in weight for the backrest, and a new luxe-touch mesh for the seat. Modern colors and a new white-frame option make it even easier to coordinate with a wide variety of spaces.



Back



Seat



More options for today's workspaces.





Contessa Seconda elevates the look and feel of any office environment.



Contessa II × PROCEED



An ergonomic task chair that harmonizes with any workspace.



Contessa II × traverse



Variations

Chair types



5-Star Swivel      High Stool      4-Star Auto-return      Meeting Chair      Cantilever Chair

Color options for frame and body

Frame	Polished	Polished	Silver	Silver	Black
Body	White	Black	Gray	Black	Black

Armrest types



Adjustable Arms      Fixed Arms

Seat types



Cushion      Mesh

Mesh & Fabric Colors

Models with Mesh Back and Mesh Seat

Back													
Seat													
	White	Black	Medium Gray	Light Gray	Beige	Dark Brown	Dark Blue	Sage	Dark Green	Green	Yellow	Orange Red	Red

Models with Mesh Back and Cushion Seat

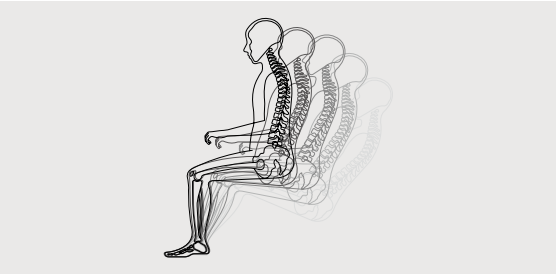
Back													
Seat													
	White	Black	Medium Gray	Light Gray	Beige	Dark Brown	Dark Blue	Sage	Dark Green	Green	Yellow	Orange Red	Red

Models with Mesh Back and Leather Seat

Back			
Seat			
	White	Black	Beige

Functions

Ankle-Tilt Reclining



An ankle-tilt mechanism enables anyone to find his or her most comfortable reclining position. Using the ankle as a pivot point, this mechanism moves in sync with the seat, for greater support – stimulating variation in posture and relaxation, with uninterrupted comfort.

Smart Operation Mechanism

A custom seating experience, at your fingertips.



Reclining Adjustment

Lock and unlock the backrest, alternating between a free recline and one of five pre-set tension gradations, all using the lever in the left armrest.



Seat Height Adjustment

Adjust the chair height, within a range of 435 to 545 mm, using the lever in the right armrest.



Seat Depth Adjustment

Adjustment of the seat's depth, within a range of 50mm, is available using the levers beneath the seat.



Reclining Tension Adjustment

Choose from four tension adjustment pre-sets to suit any body shape and posture – all from a dial under the seat.

Options



A small headrest option can be adjusted by height, depth, and angle, to create the perfect neck support.



Large, fixed headrests are elegant and wide, providing neck support especially while reclining.



Hangers are retro-fittable and compatible with both types of headrests.

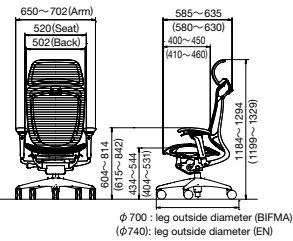


Lumbar support – available for retro-fit – is height adjustable for greater comfort (stroke 60mm).

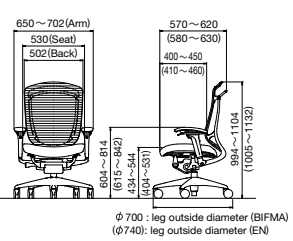
Dimensions

5-Star Swivel

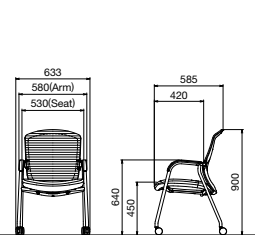
Fixed Headrest / Mesh Seat / Adjustable Arms



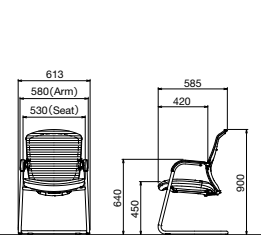
Cushion Seat / Adjustable Arms



Meeting Chair



Cantilever Chair



( ) = Dimensions in EN models



# okamura

## **OKAMURA CORPORATION**

International Sales & Marketing Div.

2-14-27, Akasaka, Minato-ku, Tokyo 107-0052, JAPAN

Tel: +81-3-5561-4085 Fax: +81-3-5561-4086

<http://www.okamura.jp>

The products listed in this catalog are available as of April 2019. Please note that specifications, dimensions, and colors are subject to change without notice. The colors of the actual products may differ somewhat from the colors shown in the catalog, depending on printing conditions.